

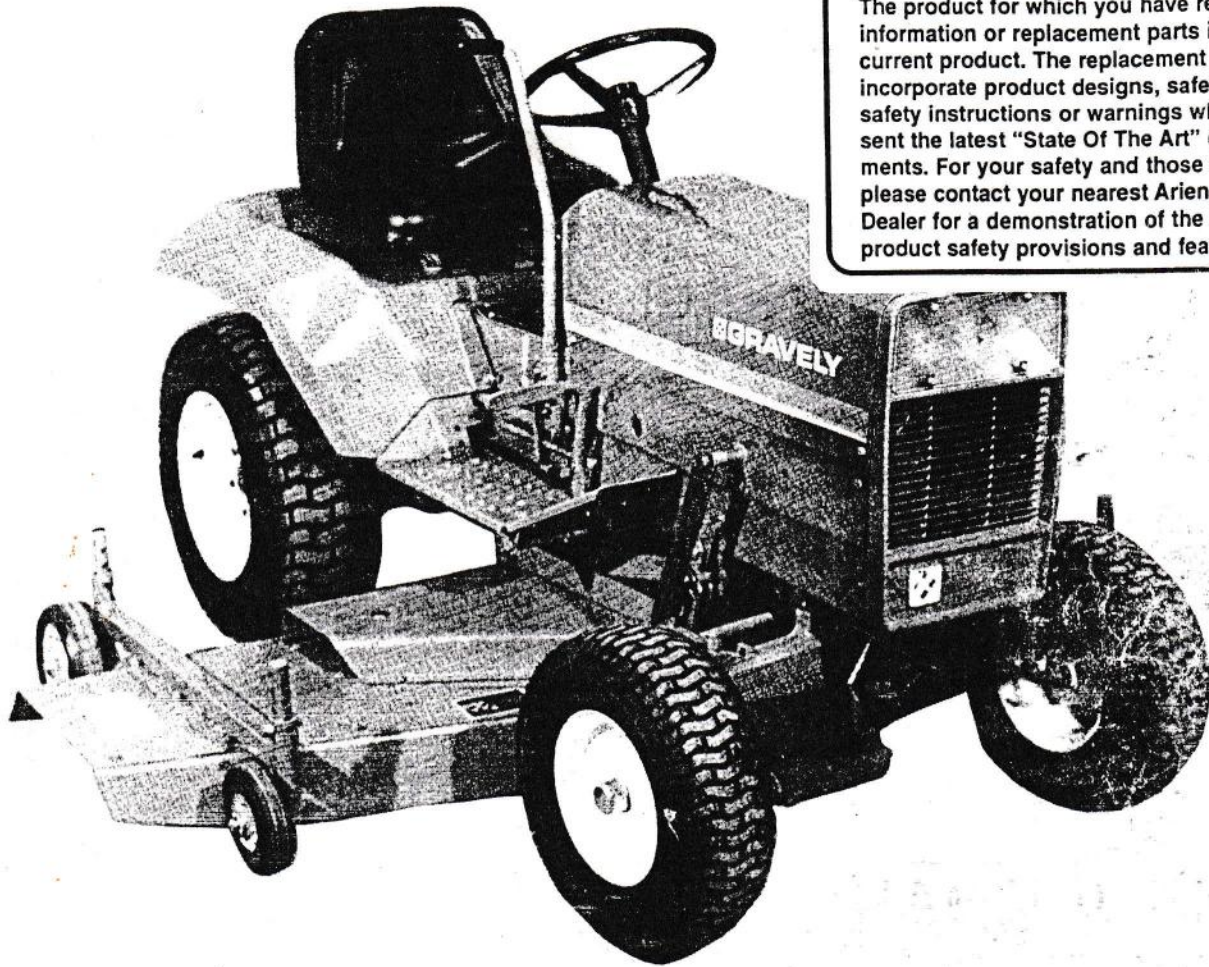
# GRAVELLY OPERATOR'S MANUAL

NAME: 60 INCH ROTARY MOWER

PART NUMBER(S): 31229

## ▲ SAFETY MESSAGE ▲

The product for which you have requested information or replacement parts is not a current product. The replacement models incorporate product designs, safety features, safety instructions or warnings which represent the latest "State Of The Art" developments. For your safety and those around you please contact your nearest Ariens/Gravely Dealer for a demonstration of the current product safety provisions and features.



The 60 Inch Rotary Mower is for use with the Gravely 8000 Series Commercial tractors that have the long frame.

All reference to left side, right side, front and rear are given from the operator's position.

MODEL NO. (ROTARY) 31229

To continue its program of quality and design improvement, the manufacturer reserves the right to change specifications, designs and prices without notice and incurring obligation.

Form No. 31230 (5-79)  
205501

Printed in U.S.A.




# CONTENTS

1.0	.....	<b>Warnings - For Your Safety</b>
1.1	.....	Instructions Before Operation
1.2	.....	Preparation For Operation
1.3	.....	Operation
2.0	.....	<b>How to Connect the Mower to the Tractor</b>
3.0	.....	<b>How to Remove the Mower from the Tractor</b>
4.0	.....	<b>How to Adjust the Cutting Height</b>
5.0	.....	<b>How to Operate the Mower</b>
6.0	.....	<b>How to Do Maintenance</b>
6.1	.....	Checking the Blades
6.2	.....	When to Lubricate the Mower
6.3	.....	When to Lubricate the Gear Box
6.4	.....	How to Adjust the Tension of the Belt
6.5	.....	How to Replace the Belt
7.0	.....	<b>How to Put the Mower in Storage</b>
8.0	.....	<b>Illustrated Parts and Parts List</b>



## 1.0 WARNINGS - FOR YOUR SAFETY

**NOTE:** This warning symbol  indicates that there is danger to persons or equipment. Read these warnings carefully and follow them.

This section gives warnings for you about operating and doing maintenance on this equipment.

Using this equipment the wrong way can cause injury to persons and damage to the equipment. Persons operating or doing maintenance on this equipment must read this Operator's Manual and follow the instructions.

It is important to understand that this Operator's Manual and other Gravely instruction books do not list every possible danger. It is not possible for Gravely to know and tell of all the dangers in operating and doing maintenance on the equipment.

The purchaser must give these instructions to the persons operating and doing maintenance on this equipment. The purchaser must get the operator and person doing maintenance on this equipment to use eye and foot protection.

### 1.1 INSTRUCTIONS BEFORE OPERATION

1. Read the tractor and this Operator's Manuals carefully before operating or doing maintenance.
2. Learn the location and the function of all the tractor and the attachment controls.
3. Know how to use the controls to stop the tractor and the mower quickly.
4. Never permit children to operate or ride on the tractor or the mower.
5. Use caution with gasoline. Gasoline is very flammable. Keep gasoline in a clean and tight container. Keep gasoline away from fire or hot items. Never put gasoline in the fuel tank while the engine is running or hot. Clean any leakage of gasoline from the tractor before starting the engine.
4. Before starting the engine, put the direction control lever in the "NEUTRAL" position and the "PTO" control in the "OUT" position.
5. Keep the tractor and the mower in good operating condition. Do the maintenance as shown in the Operator's Manual.
6. Do not operate the tractor where the area of operation is too dark for the operator to see.
7. Never operate the tractor or the mower when there is damage to any part or when any part is not in the correct position. Replace all parts that are damaged or missing before operating.

### 1.2 PREPARATION FOR OPERATION

1. Check the area of operation and remove all material that will be thrown by the mower.
2. Make sure all shields and guards are in the correct position before operating.
3. Wear strong shoes. Wear clothing that is not loose. Wear eye protection.
- 1.3 OPERATION
1. Keep away from moving parts.
2. Keep all persons and animals away from the area of operation.
3. Do not let persons ride on the tractor or the mower.
4. When operating on slopes, use a slow speed and engage the direction control lever slowly.
5. When operating on slopes, go up and down the slope.

6. Always look for and keep away from holes and other hazards.

Use caution when moving backwards. Look for persons and hazards in the way.

8. After hitting an item, stop the tractor and the engine. Check for damage. If there is damage, make repairs before restarting.

9. Operate the equipment only when in the operator's position.

10. Before leaving the tractor, put the PTO control in the "OUT" position. Turn the ignition switch to the "OFF" position and remove the ignition key.

11. If there is a sudden change in the sound or vibration of the tractor or the mower, stop the tractor and check for damage. If there is damage, make repairs before operating.

12. Never start and run the engine inside a building except to move the equipment outside. Exhaust fumes are dangerous.

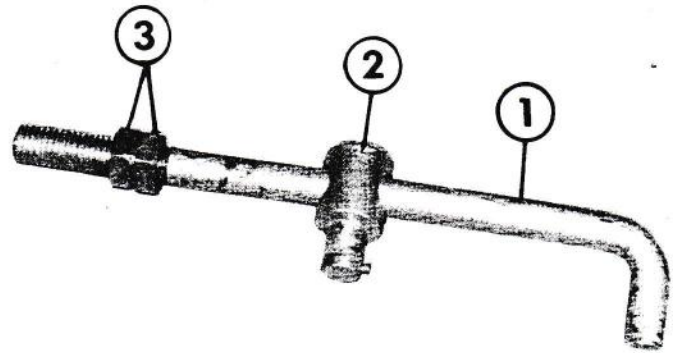
13. Always follow traffic laws while going on or near a road.

14. Go slow on surfaces where the tractor can slide.

15. Before leaving the operator's position to make adjustments or to do maintenance, put the PTO control lever in the "OUT" position. Turn the ignition switch to the "OFF" position. Wait until the engine and moving parts have stopped.

## 2.0 HOW TO CONNECT THE MOWER TO THE TRACTOR

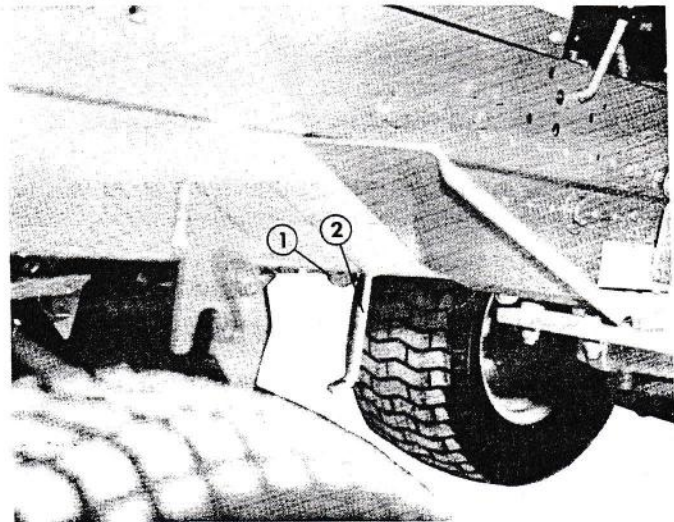
1. Assemble the lift rod as shown in figure 2.0-1.



1 - Lift Rod  
2 - Lift Pivot  
3 - Jam Nuts

Figure 2.0-1

2. Lower the attachment lift on the tractor. Hold the lift rod so the end that has the bend is up. Put the lift pivot in the second hole of the attachment lift and rotate the lift rod so the end that has the bend is down. See figure 2.0-2.

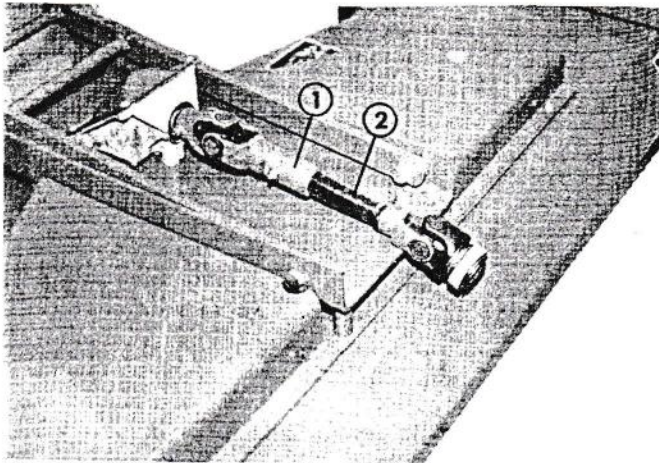


1 - Attachment Lift  
2 - Lift Rod

Figure 2.0-2



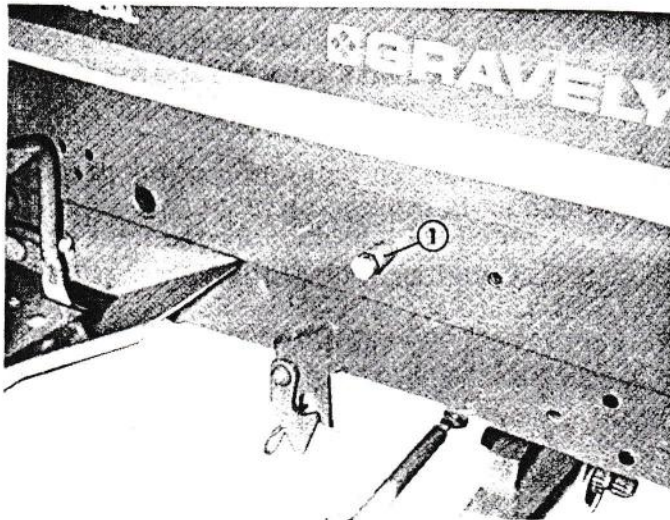
- Put multi-purpose grease on the square shaft of the universal joint. Put the square shaft into the tube of the universal joint that is fastened to the gear box of the mower. See figure 2.0-3.



1 - Tube  
2 - Square Shaft

Figure 2.0-3

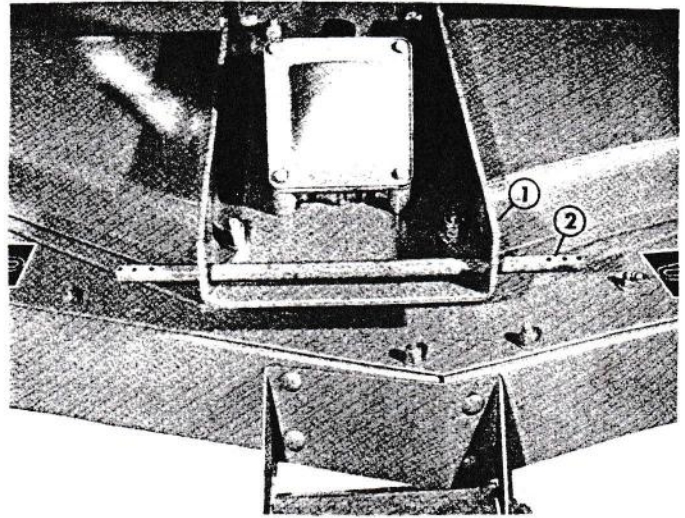
- Install the latch pin on each side of the tractor as shown in figure 2.0-4.



1 - Latch Pin

Figure 2.0-4

- Put the support plate rod through the holes in the support plate. See figure 2.0-5.



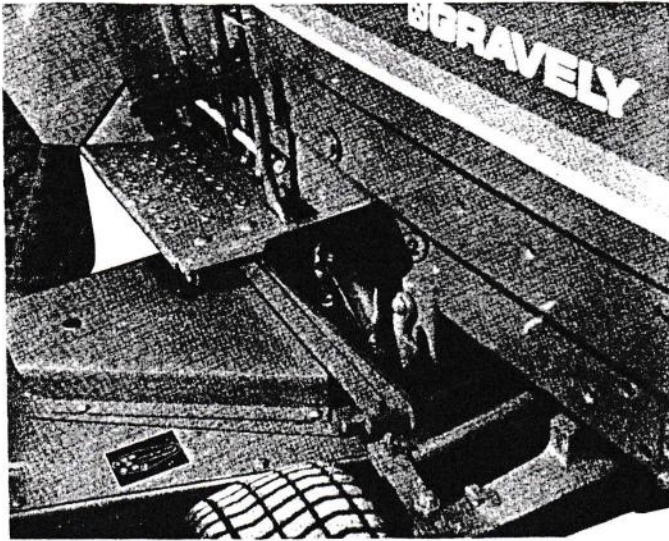
1 - Support Plate  
2 - Support Plate Rod

Figure 2.0-5

- Put the tractor in position with the front wheels of the tractor against the back of the mower. Put the direction control and the gear selector in the "NEUTRAL" position. Get assistance and roll the front of the tractor over the mower deck.
- Put multi-purpose grease on the PTO shaft of the tractor. Pull the locking collar on the universal joint towards the universal joint and hold it. If the universal joint has the locking collar that twists, twist the locking collar in the direction of the arrows and hold it. Slide the locking collar half-way on the PTO shaft and release the locking collar. Push the locking collar on the PTO shaft until it locks in position.



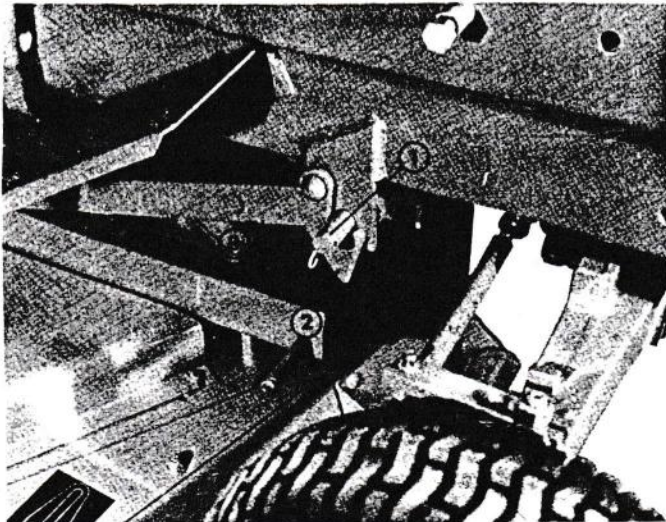
8. Put the attachment lift on the tractor in the lowest position. Put the end of the lift rod in the eye bolt on the mower. Fasten the lift rod in position with the hair pin cotter. See figure 2.0-6.



- 1 - Lift Rod
- 2 - Eye Bolt

Figure 2.0-6

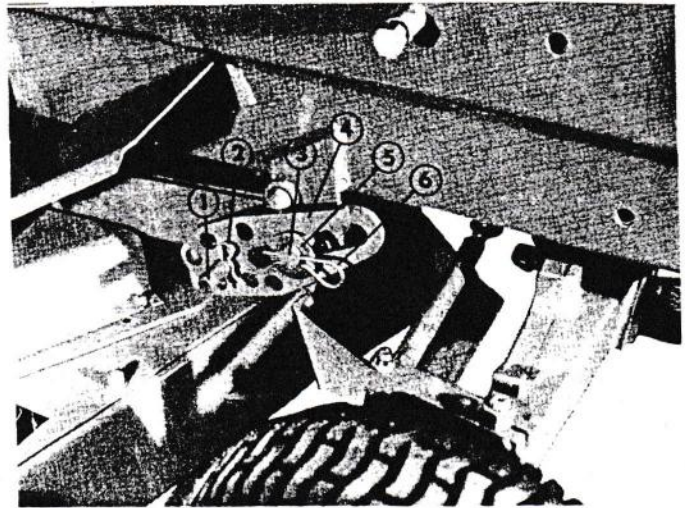
9. Open the equipment latches on the tractor. Put the pivot arm in position in the equipment latches. Close the equipment latches and install the small hair pin cotters. See figure 2.0-7.



- 1 - Pivot Arm
- 2 - Equipment Latch
- 3 - Hair Pin Cotter

Figure 2.0-7

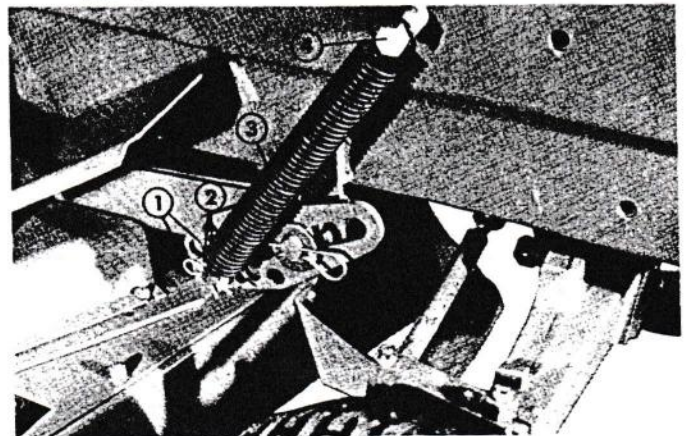
10. Use the attachment lift on the tractor to raise the mower.
11. Put a spacer on the support plate rod. Then put the leveling plate on the pivot arm and the support plate rod. See figure 2.0-8.



- 1 - Plate Support Rod
- 2 - Hair Pin Cotter
- 3 - Pivot Arm
- 4 - Leveling Plate
- 5 - Washer
- 6 - Hair Pin Cotter

Figure 2.0-8

12. Install a small hair pin cotter in the plate support rod. Install a washer and a large hair pin cotter in the pivot arm.
13. Install a hair pin cotter in the support plate rod next to the leveling plate. Put a washer, the spring, and another washer on the rod. Install another hair pin cotter. See figure 2.0-9.



- 1 - Hair Pin Cotter
- 2 - Washers
- 3 - Spring
- 4 - Latch Pin

Figure 2.0-9



14. Put the other end of the spring on the latch pin.
15. Repeat steps 11 through 14 for the other side.

### 3.0 HOW TO REMOVE THE MOWER FROM THE TRACTOR

1. Use the attachment lift on the tractor to raise the mower to the raised position.



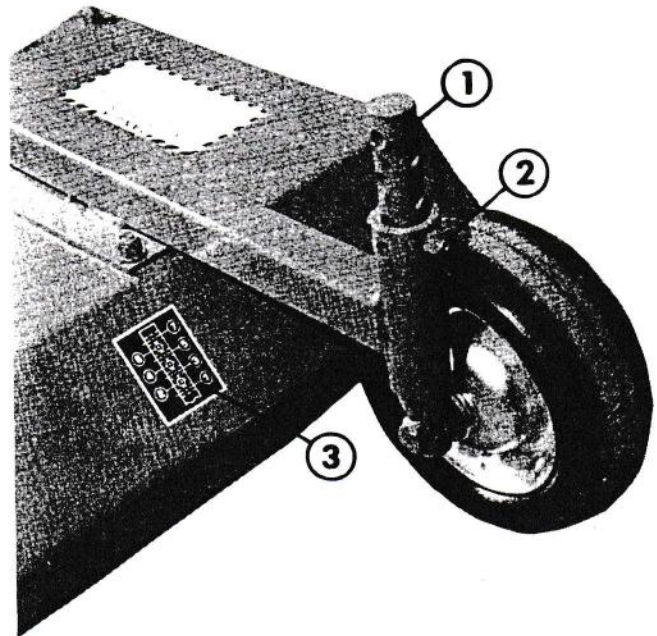
**WARNING: Stop the engine.**

2. Remove the spring from the latch pin. Remove the hair pin cotters, the spring and the washers from the support plate rod.
3. Remove the hair pin cotter from the pivot arm. Remove the leveling plate.
4. Repeat steps 2 and 3 on the other side.
5. Lower the mower to the ground.
6. Remove the hair pin cotters from the equipment latches. Open the equipment latches and lower the pivot arm.
7. Remove the lift rod from the eye bolt on the mower.
8. Pull the locking collar on the universal joint towards the universal joint and pull the universal joint from the "PTO" shaft of the tractor. If the universal joint has the locking collar that twists, twist the locking collar in the direction of the arrows and pull the universal joint from the PTO shaft of the tractor.
9. Get assistance and roll the front of the tractor over the mower deck.
10. Remove the lift rod from the lift on the tractor. Connect the lift rod to the eye bolt on the mower and install the hair pin cotter.

### 4.0 HOW TO ADJUST THE CUTTING HEIGHT

1. Use the attachment lift on the tractor to raise the mower. Stop the engine.

2. Remove the bolt from the gauge wheel axle. See figure 4.0-1.



- 1 - Gauge Wheel Axle
- 2 - Bolt
- 3 - Decal

Figure 4.0-1

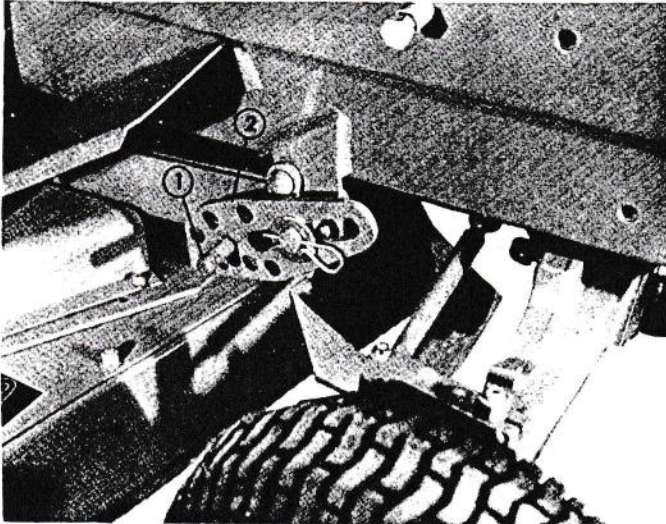
**NOTE: Each hole in the gauge wheel axle will raise or lower the cutting height 1/2" (1.27 cm). The hole that has the number "1", as indicated by the decal on the mower deck, is the lowest adjustment. The hole that has the number "7" is the highest adjustment.**

3. Raise or lower the gauge wheel axle to the cutting height that is needed. Align the adjusting holes and install the bolt.

**NOTE: Use the holes in the side of the gauge wheel axle support for the adjusting holes that have the numbers 1, 3, 5, and 7 as indicated by the decal on the mower deck. Use the holes in the end of the gauge wheel axle support for the adjusting holes that have the numbers 2, 4, and 6.**



- Adjust all four gauge wheels to the same position as indicated by the decals on the mower deck. The gauge wheels on the front of the mower must be .5 inch (1.27 cm) above the ground.
- Remove the spring from the latch pin. Remove the hair pin cotters, spring and washers from the support plate rod. See figure 4.0-2.



1 - Support Plate Rod  
2 - Leveling Plate

Figure 4.0-2

- Remove the leveling plate from the support plate rod. Install the leveling plate on the support rod using the adjusting hole that has the same number as the gauge wheels as indicated by the decals on the mower deck.
- Install the hair pin cotters, the spring and the washers that were removed in step 5. Put the end of the spring on the latch pin.

## 5.0 HOW TO OPERATE THE MOWER

Read this Operator's Manual and the Operator's Manual for the tractor before operating.

**WARNING:** Use a slow tractor speed the first time you use the tractor and the mower.

- Start the engine of the tractor. Wait until the engine is running smoothly before operating.

- Put the gear selector in the 1 or 2 position and the range selector in the "LOW" position.
- Engage the PTO.
- Move the throttle lever to the "FAST" position.
- Put the direction control lever in the forward position and mow a distance of ten feet (3 m). Stop the tractor, put the PTO in the "OFF" position and turn the ignition switch to the "OFF" position.
- Check to see if the mower is cutting the grass to the needed height. If the cutting height needs adjusting, follow the procedure shown in section 4.0.
- After you know how to operate the mower, select the speed that is best for your mowing condition.

## 6.0 HOW TO DO MAINTENANCE

**WARNING:** Stop the engine before doing maintenance.

After Each Use:

- Clean the mower.
- Inspect all nuts, bolts and other fasteners to make sure they are tight. Replace any fasteners that are missing. Tighten the bolts to the torque shown in figure 6.0-1.

BOLT TORQUE SPECIFICATIONS		
BOLT SIZE	FOOT POUNDS (ft. lbs.)	NEWTON METERS (N.m)
1/4"	7	9.5
5/16"	14	19
3/8"	25	34
7/16"	40	54
1/2"	60	82
9/16"	83	113
5/8"	120	163
3/4"	200	271

Figure 6.0-1



## 6.1 CHECKING THE BLADES

1. After every eight hours of operation, inspect the blades and replace any blade that has damage.
2. Check to see that the blades are sharp. If the blades are not sharp, remove the blades and grind the edges that have the bevel until they are sharp. Grind each edge the same amount. Make sure the blades have balance before installation. Tighten the spindle nuts to a torque of 120 ft. lbs. (163 N.m).

## 6.2 WHEN TO LUBRICATE THE MOWER

After every eight hours of operation, add multi-purpose grease to the following grease fittings:

- A. Spindles - 3
- B. Gauge Wheels - 4
- C. Idler Pivot Arms - 2
- D. Drive Shaft - 1

## 6.3 WHEN TO LUBRICATE THE GEAR BOX

After every 100 hours of operation, lubricate the gear box.

1. Remove the four bolts that fastens the gear box cover to the gear box.

---

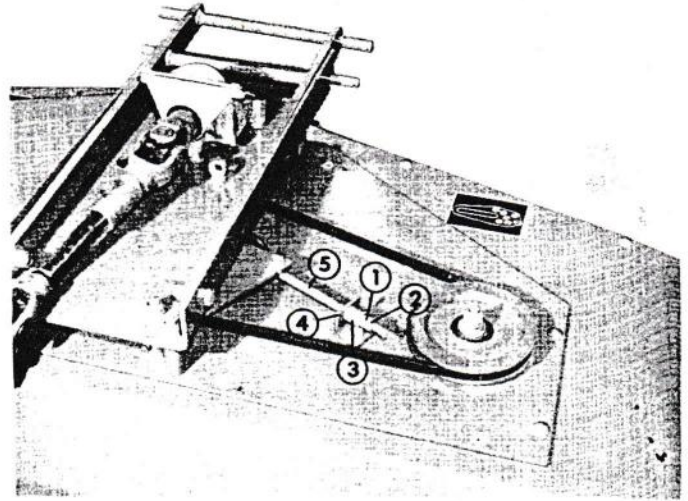
**NOTE: Use caution when removing the gear box cover. Do not damage the gasket. The gasket must be replaced if there is damage.**

---

2. Remove the gear box cover. Remove the old grease from the gear box. Fill the gear box with new multi-purpose grease.
3. Install the gear box cover.

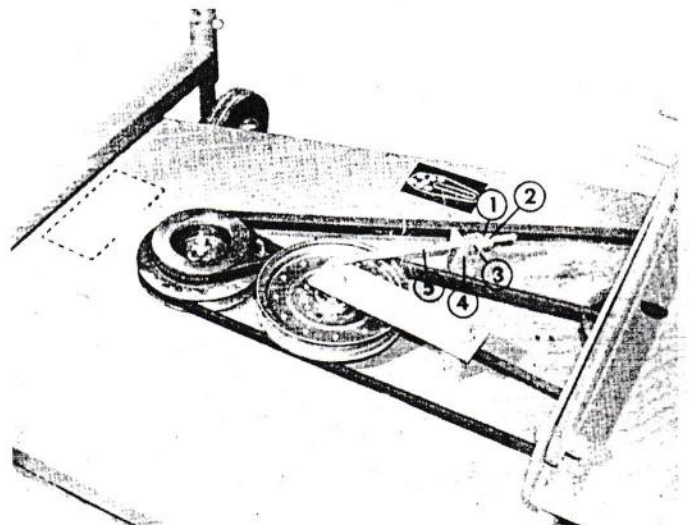
## 6.4 HOW TO ADJUST THE TENSION OF THE BELT

1. Remove the right side and the left side belt covers.
2. Hold the adjusting nut and turn the jam nut counterclockwise. See figure 6.0-2 for the right side. See figure 6.0-3 for the left side.



- 1 - Adjusting Nut
- 2 - Jam Nut
- 3 - Spring
- 4 - Bracket
- 5 - Adjusting Rod

Figure 6.0-2



- 1 - Adjusting Nut
- 2 - Jam Nut
- 3 - Spring
- 4 - Bracket
- 5 - Adjusting Rod

Figure 6.0-3

3. Turn the adjusting nut clockwise until there is a gap of .010" to .015" (.25 mm to .38 mm) between the coils of the spring.
4. Hold the adjusting nut and tighten the jam nut against the adjusting nut.



5. Install the right side and the left side belt covers.

### 6.5 HOW TO REPLACE THE BELT

1. Remove the mower from the tractor as shown in section 3.0.
2. Remove the right side and the left side belt covers.
3. Remove the gear housing support.
4. Remove the jam nut, the adjusting nut and the spring from the adjusting rods. See figure 6.0-2 and figure 6.0-3.
5. Push the adjusting rods through the brackets.
6. Remove the old belts.
7. Install the new belts as shown in figure 6.0-4 or the belt diagram on the mower deck.

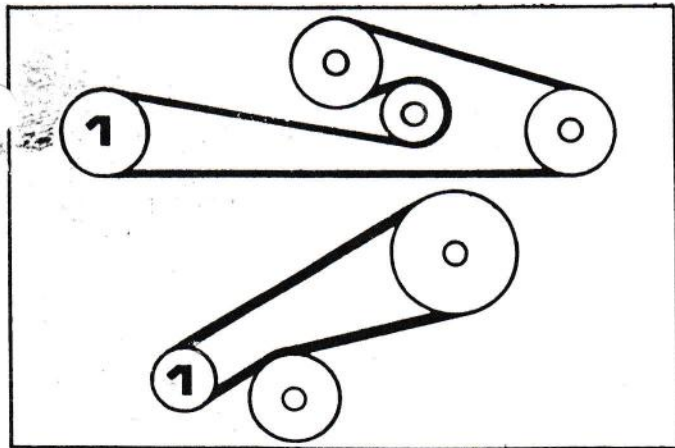


Figure 6.0-4

10. Adjust the tension of the belts as shown in section 6.4.
11. Install the right side and the left side belt covers.
12. Connect the mower to the tractor as shown in section 2.0.

### 7.0 HOW TO PUT THE MOWER IN STORAGE

If the mower will not be used for three months or more do the following:

1. Remove the mower from the tractor.
2. Clean all the grass and dirt from the mower. Clean the grass from under the mower deck.
3. To prevent rust, put paint or lubricant on any area where the paint has been removed.
4. Do the maintenance shown in section 6.0.

8. Put the adjusting rods through the brackets. Install the spring and the nuts on the adjusting rods.
9. Install the gear housing support.

---

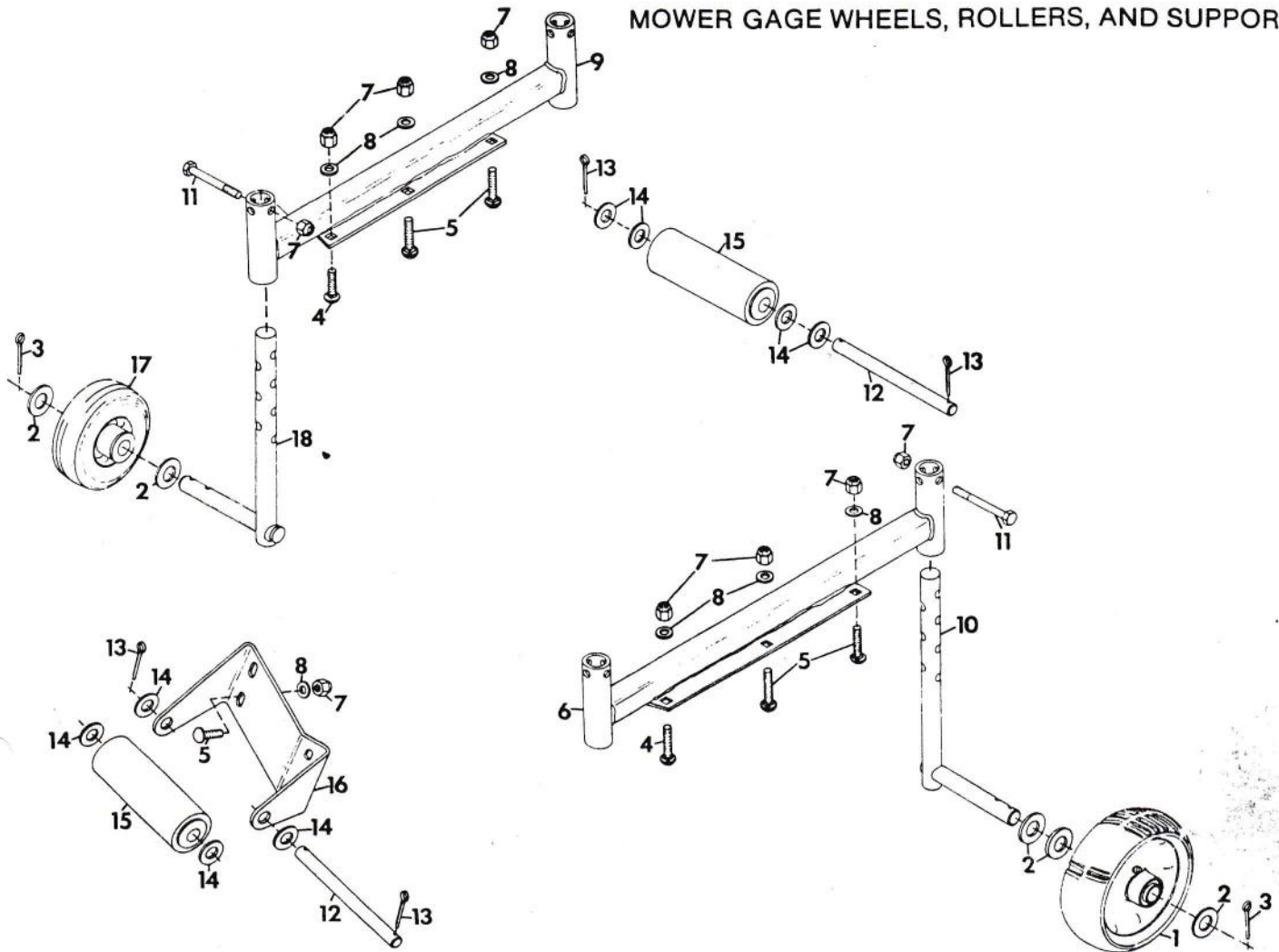
**NOTE: When installing the gear housing support, make sure the belt is around the drive pulley.**

---



## 8.0 ILLUSTRATED PARTS AND PARTS LISTS

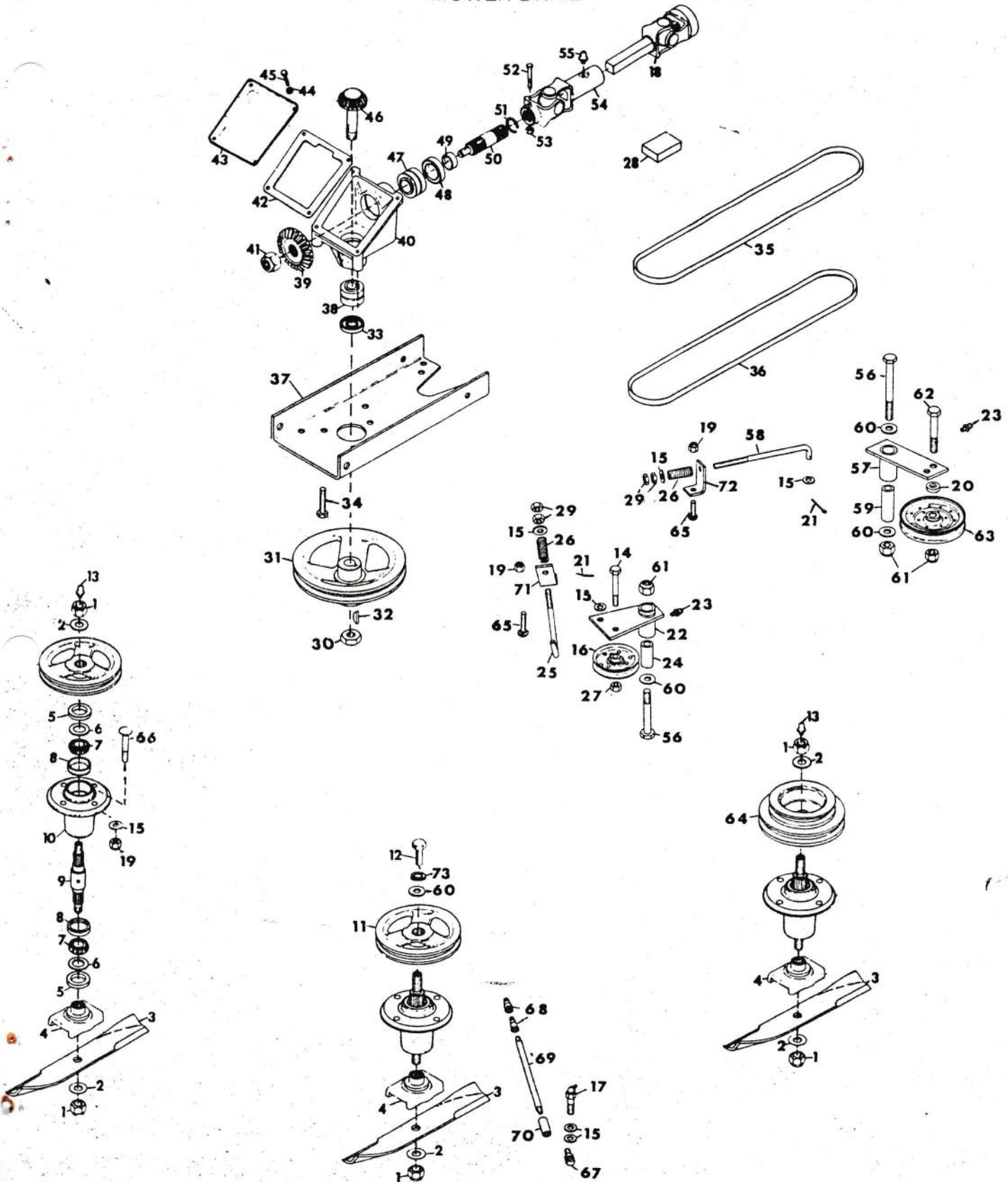
### MOWER GAGE WHEELS, ROLLERS, AND SUPPORTS



Item No.	Part No.	Qty.	Description
1	31386	2	Gage Wheel 8.250
2	423315	10	Washer Flat .813 x 1.375 x .100
3	137204	4	Pin, Cotter; 1/8 x 1.500
4	120915	4	Bolt 3/8-16 x 1.000 RD HD SQ NK
5	126390	12	Bolt 3/8-16 x .875 RD HD SQ NK
6	31632	1	Support Left
7	456004	20	Nut, Lock; 3/8-16
8	120394	16	Washer, Flat .406 x .812 x .065
9	31633	1	Support Right
10	31347	2	Axle for 8.250 Gage Wheel
11	180130	4	Bolt, Hex 3/8-16 x 2.000
12	24795	2	Shaft, Center Roller
13	120123	4	Pin, Cotter 1/8 x 1.250
14	131016	8	Washer, Flat .656 x 1.312 x .095
15	31390	2	Roller, Gage
16	31353	1	Bracket, Roller Front
17	11386	2	Gage Wheel 6.000
18	31350	2	Axle for 6.000 Gage Wheel



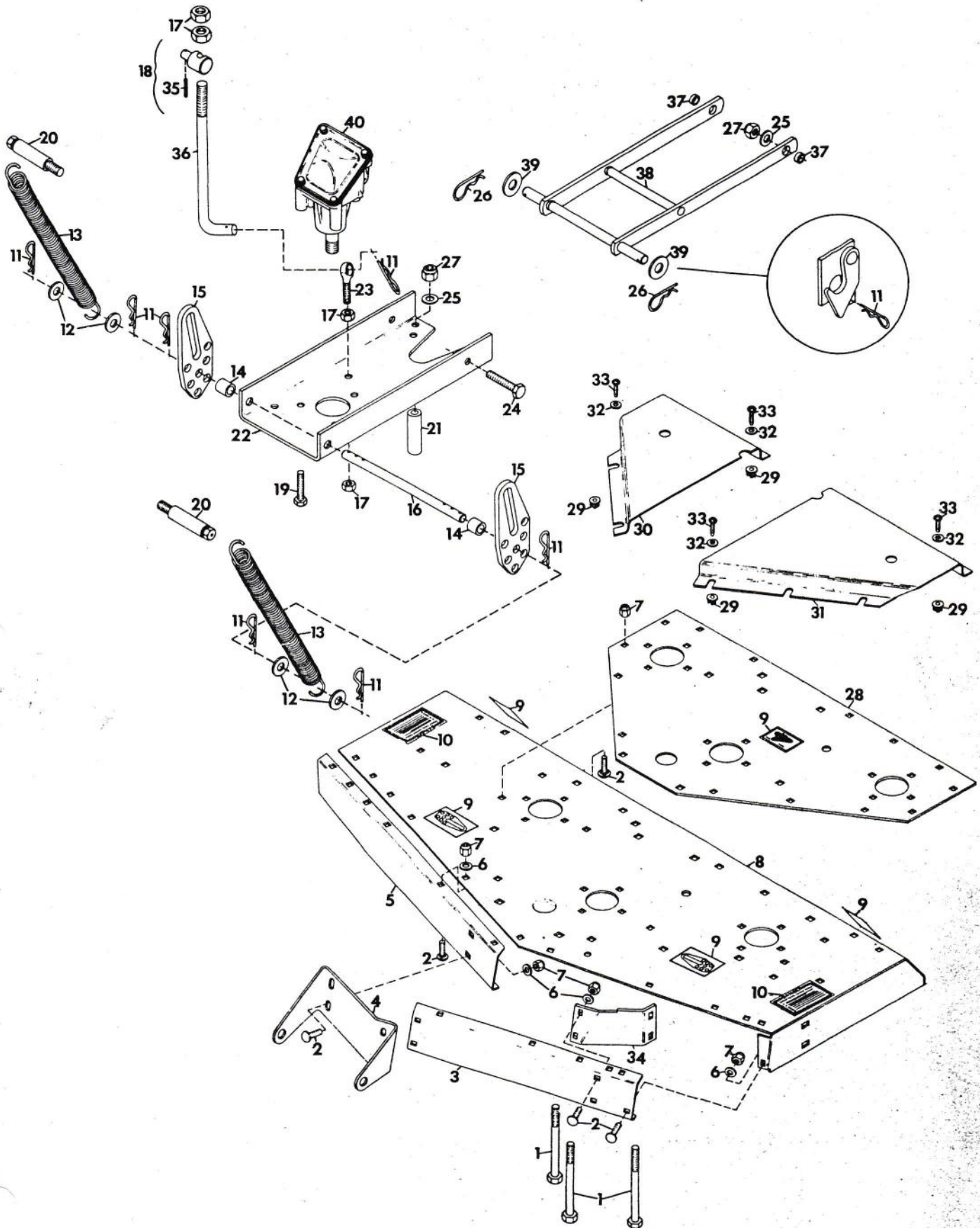
# MOWER DRIVE





Item No.	Part No.	Qty.	Description
1	418692	5	Nut, Lock 5/8-11
2	131016	5	Washer, Flat .656 x 1.312 x .095
3	25124	3	Blade
4	23026	3	Cradle, Blade
5	21211	6	Seal, Steel
6	20743	6	Washer, Flat: .975 x 1.970 x .030
7	9246	6	Cone, Roller Bearing
8	9245	6	Cup, Roller Bearing
9	21216	2	Shaft, Left and Right Spindles
	31356	1	Shaft, Center Spindle
10	21215	2	Housing, Left and Right Spindles
	21218	1	Housing, Center Spindle
11	31359	2	Pulley
12	22065	1	Bolt, Special
13	411010	2	Fitting, Lube 1/8 NPT
14	180128	1	Bojt, Hex 3/8-16 x 1.75
15	120394	18	Washer, Flat .406 x .812 x .065 <del>06437300</del> 06437300
16	21060	1	Sheave, Idler
17	273351	1	Fitting, Lube 65 Deg. NPT
18	31389	1	Universal Shaft, Male
19	456004	14	Nut, Lock; 3/8-16
20	31368	1	Spacer
21	179252	2	Pin, Cotter .062 x 1.000
22	31364	1	Weldment, Idler Pivot
23	14406	2	Fitting, Lube; 1/4-28 NPT
24	31367	1	Spacer
25	21112	1	Rod, Idler
26	11779	2	Spring
27	413534	1	Nut, Lock 3/8-16
28	24560	1	Kit, Repair Universal Shaft, Male
	31828	1	Kit, Repair Universal Shaft, Female
29	120369	4	Nut, Hex; 3/8-24 ✓
30	451539	1	Nut Jam 3/4-10 Hex Heavy ✓
31	31382	1	Pulley, Gearbox
32	431787	1	Key, Woodruff 3/16 x 5/8 No. 61
33	14645	1	Seal, Oil
34	180173	3	Bolt, Hex; 1/2-13 x 1.000
35	31369	1	Belt, A Section
36	31383	1	Belt, B Section
37	31373	1	Plate, Support
38	14644	1	Bearing, Taper Roller .750
39	19607	1	Gear, Bevel
40	14636	1	Housing, Gear
41	456007	1	Nut, Lock; 3/4-10
42	11231	1	Gasket, Gear Housing
43	10982	1	Cover, Gear Housing
44	120380	4	Washer, Lock 1/4 Spring
45	180016	4	Bolt, Hex 1/4-20 x .50
46	19608	1	Pinion Gear
47	14640	1	Bearing, Taper Roller 1.000
48	14646	1	Seal, Oil
49	14641	1	Spacer
50	31412	1	Shaft
51	14642	1	Ring, Retaining; 1.000 Shaft
52	180046	1	Bolt Hex 1/4-20 x 2.250
53	419454	1	Nut, Lock 1/4-20
54	31388	1	Universal Shaft, Female
55	411027	1	Fitting, Lube 1/4-28
56	180192	2	Bolt Hex 1/2-13 x 3.500 •
57	31360	1	Weldment, Idler Pivot
58	21111	1	Rod, Idler
59	31363	1	Spacer
60	120389	4	Washer, Flat .500 x 1.250 x .083 •
61	435507	3	Nut, Lock; 1/2-13
62	180181	1	Bolt Hex 1/2-13 x 2.000
63	22063	1	Pulley, Flat Idler
64	31358	1	Double Pulley
65	120915	2	Bolt 3/8-16 x 1.000 RD HD SQ NK
66	126406	12	Bolt, 3/8-16 x 1.375 RD HD SQ NK
67	191759	1	Elbow Adaptor 90 Deg. 1/8-27 NPT
68	144117	2	Elbow, Street 1/8-27
69	31357	1	Nipple, Pipe 1/8-27 x 5.50
70	144067	1	Coupling, Pipe 1/8-27
71	31345	1	Support, Spring
72	31346	1	Support, Spring
73	120384	1	Washer, Lock 1/2 Spring

# MOWER HOUSING & FRAME





Item No.	Part No.	Qty.	Description
1	180192	4	Bolt Hex 1/2-13 x 3.500
2	126390	28	Bolt 3/8-16 x .875 RD HD SQ NK
3	31344	1	Plate, Front Cover L.H.
4	31353	1	Bracket, Roller Front
5	31343	1	Plate, Front Cover R.H.
6	120394	27	Washer, Flat .406 x .812 x .065
7	456004	32	Nut, Lock; 3/8-16
8	31330	1	Weldment, 60 Inch Deck
9	31767	1	Decals, Height Adj. & Belt Layout
10	18549	2	Decal, Danger
11	15691	9	Cotter, Hair Pin
12	131016	4	Washer, Flat .656 x 1.312 x .095
13	31689	2	Spring
14	31380	2	Spacer, Rod
15	31381	2	Plate, Leveling
16	31379	1	Rod, Support Plate
17	120238	4	Nut, Jam 1/2-13 Hex
18	11317	1	Assembly, Mower Lift Pivot
19	180173	3	Bolt, Hex; 1/2-13 x 1.000
20	31688	2	Pin Latch
21	31367	4	Spacer
22	31373	1	Plate; Support
23	19350	1	Bolt, Eye
24	180179	2	Bolt Hex 1/2-13 x 1.750
25	120396	6	Washer, Flat .531 x 1.062 x .095
26	10405	2	Pin, Hair
27	435507	6	Nut, Lock; 1/2-13
28	31342	1	Plate, Deck Support
29	11777	10	Grommet, Plastic
30	31384	1	Cover, Belt R.H.
31	31385	1	Cover, Belt L.H.
32	120392	10	Washer, Flat .281 x .625 x .065
33	160536	10	Screw, Mach 1/4-20 x .625 RD HD
34	31354	1	Baffle, Front
35	142485	1	Pin, Groove; .125 x .625
36	31387	1	Rod, Lift
37	31378	2	Bushing
38	31374	1	Weldment, Pivot Arm
39	423315	2	Washer, Flat .813 x 1.375 x .100
40			See Mower Drive for Components

## GRAVELY ATTACHMENT LIMITED WARRANTY

This Limited Warranty is issued by Gravelly Division, McGraw-Edison Company, and consists of the following terms:

1. Only the original purchaser of new Gravelly manufactured attachments is covered by this Warranty.
2. This Warranty covers repair or replacement of parts manufactured by Gravelly which are defective in material or workmanship. Gravelly will pay for parts and labor only.
3. The Warranty starts the date of purchase and lasts for NINETY (90) DAYS for attachments used in Roofer applications, and TWELVE (12) MONTHS for products used in all other applications.
4. Some components of Gravelly attachments are not covered by the Gravelly Warranty. These components are covered by the original manufacturer's warranty, which is included with the product. They are:
  - a. Engine - Honda
  - b. Tires - Goodyear and Armstrong
5. To obtain warranty service on Gravelly attachments including components not manufactured by Gravelly, use this procedure:
  - a. Notify the Gravelly dealer from whom you purchased the attachment
  - b. If you have moved and it is not convenient to notify the selling dealer, notify the nearest Gravelly dealer. You should supply this dealer with a copy of the bill of sale as proof of the date of purchase.
  - c. Make arrangements to have the attachment delivered to the dealer (refer to paragraph 6(a) below).
  - d. If you have any questions concerning the Gravelly Limited Warranty, they should be referred to:

Gravelly Division  
McGraw-Edison Company  
One Gravelly Lane  
Clemmons, NC 27012

Attn: Manager of Customer Services
  - e. Warranty service on Gravelly attachments must be performed by an authorized Gravelly dealer or Gravelly factory branch.

6. This Warranty does not cover the following:
  - a. Transportation between owner's home or place of business and the dealership. If the dealer provides the transportation of the attachment, he will charge the owner his usual rate for such service.
  - b. Normal maintenance services and normal replacement of items such as spark plugs, belts, oil, oil filters, air filters, and mower, plow or cultivator blades.
7. GRAVELLY MAKES NO OTHER EXPRESS WARRANTIES. ANY IMPLIED WARRANTIES, INCLUDING WARRANTIES AS TO MERCHANTABILITY OR FITNESS FOR A PARTICULAR PURPOSE, ARE LIMITED IN DURATION TO THE PERIOD SET OUT IN PARAGRAPH 3 ABOVE. SOME STATES DO NOT ALLOW LIMITATIONS ON HOW LONG AN IMPLIED WARRANTY LASTS, SO THE ABOVE STATEMENT MAY NOT APPLY TO YOU.
8. GRAVELLY SHALL HAVE NO RESPONSIBILITY FOR INCIDENTAL OR CONSEQUENTIAL DAMAGES RESULTING FROM THE BREACH OF ANY WARRANTY, INCLUDING BUT NOT LIMITED TO, INCONVENIENCE, RENTAL OR PURCHASE OF REPLACEMENT PRODUCTS, LOSS OF PROFITS OR COMMERCIAL LOSS. SOME STATES DO NOT ALLOW THE EXCLUSION OR LIMITATION OF INCIDENTAL OR CONSEQUENTIAL DAMAGES, SO THE ABOVE LIMITATION OR EXCLUSION MAY NOT APPLY TO YOU.
9. This Warranty gives you specific legal rights, and you may have other rights which vary from state to state.
10. A Gravelly product registration card is supplied with each Gravelly product. Please complete the card and return it to Gravelly at the address listed on the card. The registration card will be used by Gravelly for:
  - a. Recording date of purchase.
  - b. Notification of owners in compliance with the Consumer Product Safety Act, should any notification be necessary.The return of registration card is not required in order to take advantages of this Warranty.
11. This Warranty is not subject to change or modification by anyone, including Gravelly dealers, and no Gravelly dealer is authorized to make any representations or promises on Gravelly's behalf.

 **GRAVELLY.**

One Gravelly Lane, Clemmons, NC 27012